

# Star Crossing

Designed by Diane Nagel  
Featuring the Chamberlain Collection by Nancy Gere  
Size: 76.5" x 90"



Check [www.windhamfabrics.com](http://www.windhamfabrics.com) Free Project section to see if there are any pattern updates before you start your quilt project



WINDHAM FABRICS

812 Jersey Ave ~ Jersey City, NJ 07310 ~ 201.659.0444 ~ FAX: 201.659.9719  
[www.windhamfabrics.com](http://www.windhamfabrics.com) email: [retail@windhamfabrics.com](mailto:retail@windhamfabrics.com)

# Star Crossing

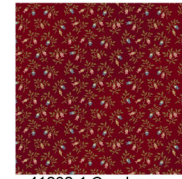
Page 2

Finished Block A: 9" x 9"  
 Finished Block B: 9" x 9"  
 Finished Blocks C: 9" x 9"

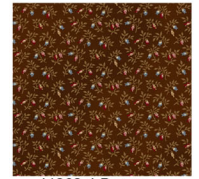
|           |         |           |             |  |  |  |
|-----------|---------|-----------|-------------|--|--|--|
| Fabric A: | 41262-4 | Brown     | 1 ¾ yards   |  |  |  |
| Fabric B: | 41267-5 | Gold      | 2 ¼ yards   |  |  |  |
| Fabric C: | 41261-1 | Cranberry | 1 3/8 yards |  |  |  |
| Fabric D: | 41268-3 | Teal      | 3/8 yard    |  |  |  |
| Fabric E: | 41264-6 | Cream     | 2 ½ yards   |  |  |  |
| Fabric F: | 41262-2 | Indigo    | 3/8 yard    |  |  |  |
| Fabric G: | 41267-3 | Teal      | 3/8 yard    |  |  |  |
| Fabric H: | 41265-2 | Indigo    | 3/8 yard    |  |  |  |
| Fabric I: | 41266-3 | Teal      | 3/8 yard    |  |  |  |
| Fabric J: | 41261-2 | Indigo    | ¾ yard      |  |  |  |
| Fabric K: | 41260-1 | Cranberry | 3/8 yard    |  |  |  |
| Fabric L: | 41260-3 | Teal      | 3/8 yard    |  |  |  |
| Fabric M: | 41260-2 | Indigo    | 3/8 yard    |  |  |  |
| Fabric N: | 41262-1 | Cranberry | 3/8 yard    |  |  |  |
| Fabric O: | 41263-1 | Cranberry | 3/8 yard    |  |  |  |



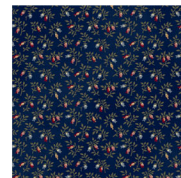
41267-5 Gold



41262-1 Cranberry



41262-4 Brown



41262-2 Indigo



41264-6 Cream



41268-3 Teal



41266-3 Teal



41265-2 Indigo



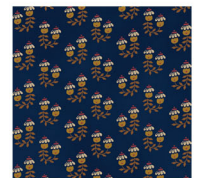
41267-3 Teal



41260-3 Teal



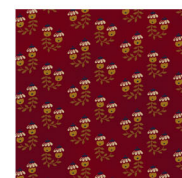
41260-1 Cranberry



41261-2 Indigo



41263-1 Cranberry



41261-1 Cranberry



41260-2 Indigo

Backing: Fabric of choice: 5 ½ yards

# Star Crossing

Page 3

## Cutting:

Fabric A: (9) 3 7/8" x 42" strips; cut into (84) 3 7/8" squares, cut once on diagonal for Block 1.  
(9) 2 1/2" x 42" binding strips.

Fabric B: (12) 2" x 42" strips; cut into (336) 1 1/2" x 2" rectangles for Block 1.  
(3) 4 1/2" x 42" strips; cut into (60) 1 1/2" x 4 1/2" rectangles for Block 2.  
(3) 3 1/2" x 42" strips; cut into (60) 1 1/2" x 3 1/2" rectangles for Block 2.  
(4) 1 1/2" x 42" strips; cut into (15) 1 1/2" x 9 1/2" rectangles for Block 2.  
(2) 1 1/2" x 42" strips; cut into (11) 1 1/2" x 4 1/2" rectangles for Setting Triangles.  
(1) 1 1/2" x 42" strip; cut into (11) 1 1/2" x 3 1/2" rectangles for Setting Triangles.  
(1) 5" x 42" strip; cut into (22) 1 1/2" x 5" rectangles for Setting Triangles.  
(1) 5" x 42" strip; cut into (8) 1 1/2" x 5" rectangle for Corner Square Triangles.

Fabric C: (6) 2" x 42" strips; cut into (168) 1 1/2" x 2" rectangles for Block 1.  
(2) 4 1/2" x 42" strips; cut into (30) 1 1/2" x 4 1/2" rectangles for Block 2. Save remaining strip.  
(4) 1 1/2" x 42" strips; cut into (15) 1 1/2" x 9 1/2" rectangles for Block 2.  
Use remaining strip to cut (11) 1 1/2" x 4 1/2" rectangles for Setting Triangles.  
(2) 1 1/2" x 42" strips; cut into (11) 1 1/2" x 6" rectangles for Setting Triangles.  
(1) 1 1/2" x 42" strip; cut into (4) 1 1/2" x 5" rectangles for Corner Square Triangles.  
(1) 9 1/2" square.

Fabric D: (1) 3 1/2" x 42" strip; cut into (7) 3 1/2" squares for Block 1.  
(2) 3 1/2" x 42" strips; cut into (28) 2" x 3 1/2" rectangles for Block 1.

Fabric E: (9) 3 7/8" x 42" strips; cut into (84) 3 7/8" squares, cut once on diagonal for Block 1.  
(5) 3 1/2" x 42" strips; cut into (60) 3 1/2" squares for Block 2.  
(1) 3 1/2" x 42" strip; cut into (11) 3 1/2" squares for Setting Triangles.  
(2) 3 7/8" x 42" strips; cut into (11) 3 7/8" squares, cut once on diagonal for Setting Triangles. Save remaining strip.  
From remaining strip cut (4) 3 7/8" squares, cut once on diagonal for Corner Square Triangles.  
(1) 13 7/8" x 42" strip; cut into (3) 13 7/8" squares, cut twice on diagonal. Use only 11 in quilt.

Fabric F: (1) 3 1/2" x 42" strip; cut into (7) 3 1/2" squares for Block 1.  
(2) 3 1/2" x 42" strips; cut into (28) 2" x 3 1/2" rectangles for Block 1.

Fabric G: (1) 3 1/2" x 42" strip; cut into (5) 3 1/2" squares for Block 1.  
(1) 3 1/2" x 42" strips; cut into (20) 2" x 3 1/2" rectangles for Block 1.

Fabric H: (1) 3 1/2" x 42" strip; cut into (9) 3 1/2" squares for Block 1.  
(2) 3 1/2" x 42" strips; cut into (36) 2" x 3 1/2" rectangles for Block 1.

Fabric I: (1) 3 1/2" x 42" strip; cut into (7) 3 1/2" squares for Block 1.  
(2) 3 1/2" x 42" strips; cut into (28) 2" x 3 1/2" rectangles for Block 1.



WINDHAM FABRICS

# Star Crossing

Page 4

- Fabric J: (1) 3 1/2" x 42" strip; cut into (7) 3 1/2" squares for Block 1.  
(2) 3 1/2" x 42" strips; cut into (28) 2" x 3 1/2" rectangles for Block 1.  
(1) 9 1/2" x 42" strip; cut into (4) 9 1/2" squares.

Fabric K: (1) 9 1/2" x 42" strip; cut into (3) 9 1/2" squares.

Fabric L: (1) 9 1/2" x 42" strip; cut into (2) 9 1/2" squares.

Fabric M: (1) 9 1/2" x 42" strip; cut into (3) 9 1/2" squares.

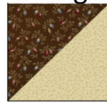
Fabric N: (1) 9 1/2" x 42" strip; cut into (1) 9 1/2" squares.

Fabric O: (1) 9 1/2" x 42" strip; cut into (1) 9 1/2" squares.

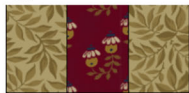
## Block Assembly:

Block 1:

1. Sew a Fabric A and E 3 7/8" triangle together on long sides to make a half square triangle unit. Press to the dark fabric. Make 4 →



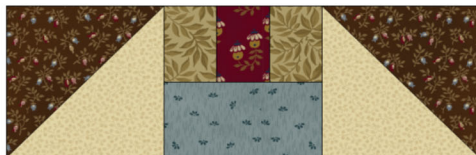
2. Sew the long side of a Fabric B 1 1/2" x 2" rectangle to both long sides of a Fabric C 1 1/2" x 2" rectangle as shown →



Unit 1 →

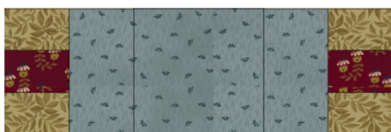


3. Sew a Fabric D 2" x 3 1/2" rectangle to the bottom of the unit in Step 2 to complete Unit 1. Make 4.
4. Rotate and sew a half square triangle unit from Step 1 to both sides of Unit 1 as shown in Diagram 1. This is row 1 of the block. Make 2.



← Diagram 1. Make 2.

5. Rotate and sew a Unit 1 to both sides of a Fabric D 3 1/2" square as shown to make row 2 of the block.

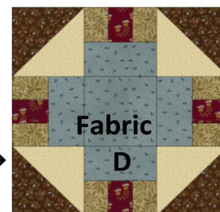


← Row 2.

6. Sew to the bottom of the of row 1. ↓



Diagram 2 →



← Block 1 completed.  
Make 7 of Fabric D.

7. Rotate the second row 1 section and sew to the bottom of the block to complete Block 1. Repeat to make (7) blocks using Fabric D for the center. See Diagram 2.



WINDHAM FABRICS

# Star Crossing

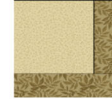
Page 5

- Repeat Steps 1-7 to make (7) more blocks in Fabrics F, I, and J. Repeat to make to make (5) blocks using Fabric G, and (9) blocks using Fabric H. You should now have a total of 42 Blocks 1.

Block 2:

- Sew a Fabric B  $1\frac{1}{2}$ " x  $3\frac{1}{2}$ " rectangle to the right side of a Fabric E  $3\frac{1}{2}$ " square. Sew a Fabric B  $1\frac{1}{2}$ " x  $4\frac{1}{2}$ " rectangle to the bottom of the unit to make Unit 2. Make 4.

Unit 2. →



- Sew a Unit 2 to both long sides of a Fabric C  $1\frac{1}{2}$ " x  $4\frac{1}{2}$ " rectangle as shown to make row 1 of the block. Make 2.

Row 1 →



- Sew a Fabric C  $1\frac{1}{2}$ " x  $9\frac{1}{2}$ " rectangle to the bottom of row 1.



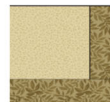
- Rotate and sew the second row 1 section to the bottom of the block to complete.
- Repeat Steps 1-4 to make (15) blocks.



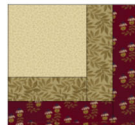
←Block 2. Make 15.

Setting Triangle:

- Make (4) Units 2 as shown in Step 1 for Block 2 →
- Sew a Fabric C  $1\frac{1}{2}$ " x  $4\frac{1}{2}$ " rectangle to the bottom of a Unit 2, and a Fabric C  $1\frac{1}{2}$ " x 6" rectangle to the right side of the block as shown →



Make 4.



*Note: the bottom right edges will not match up, they will be trimmed off later.*

- Sew a Fabric B  $1\frac{1}{2}$ " x 5" rectangle to the bottom and right side of the block. See Diagram 3.

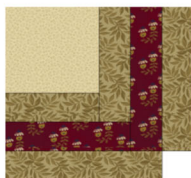
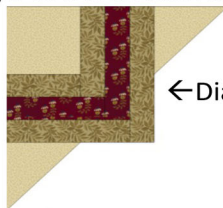


Diagram 3.



←Diagram 4.

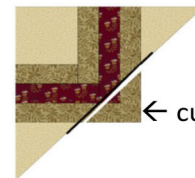


Diagram 5.

← cut off even with triangles

- Sew the short side of a Fabric E  $3\frac{7}{8}$ " triangle to the left bottom and upper right side of the unit in Step 3. See Diagram 4. Use a ruler to line up along the diagonal edges of the triangles, and trim off the center Fabric C and B strips to completed the Setting Triangle. See Diagram 5. Repeat to make (11) Setting Triangles.



←Setting Triangle. Make 11.



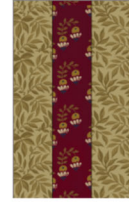
WINDHAM FABRICS

# Star Crossing

Page 6

## Corner Setting Triangles:

1. Sew a Fabric B  $1\frac{1}{2}$ " x 5" rectangle to the long sides of a Fabric C  $1\frac{1}{2}$ " x 5" rectangle.



2. Sew the short sides of a Fabric E  $3\frac{7}{8}$ " triangle to both sides of the three strip unit as shown in Diagram 6. The center strips will extend past the triangles.



← Diagram 6.



← Diagram 7.

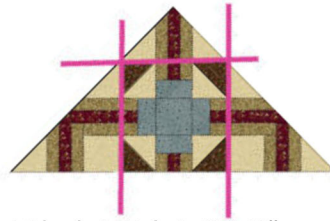
Corner Setting Triangle →

3. Use a straight ruler to line up against the long side of the triangles and trim off the ends of the strip set to a point as shown in Diagram 7. Repeat to make (4) Corner Setting Triangles.

## Quilt Assembly:

*The quilt center is set on point, so it will be sewn together in diagonal rows using side setting and corner setting triangles as described for each row. Follow the diagram for placement and rotation of each block, sew each row in the order stated from left to right. The diagrams for each row have been turned for easier reading.*

Row 1 is actually a pieced triangle row: Sew a Side Setting Triangle to the left and right side of a Fabric D Block 1. Sew a corner setting triangle to the top of Block 1.



Row 2: Fabric E  $13\frac{7}{8}$ " quarter square triangle, Fabric J Block 1, Fabric K  $9\frac{1}{2}$ " square, Fabric F Block 1 and another Fabric E  $13\frac{7}{8}$ " quarter square triangle.

Row 2 →



Row 3: Side setting triangle, Fabric F Block 1, Block 2, Fabric I Block 1, Block 2, Fabric G Block 1, Side Setting Triangle.

Row 3 →



Row 4: Fabric E  $13\frac{7}{8}$ " quarter square triangle, Fabric G Block 1, Fabric J  $9\frac{1}{2}$ " square, Fabric H Block 1, Fabric M  $9\frac{1}{2}$ " square, Fabric D Block 1, Fabric J  $9\frac{1}{2}$ " square, Fabric H Block 1, and Fabric E  $13\frac{7}{8}$ " quarter square triangle.



Row 5: Side Setting Triangle, Fabric J Block 1, Block 2, Fabric D Block 1, Block 2, Fabric J Block 1, Block 2, Fabric H Block 1,

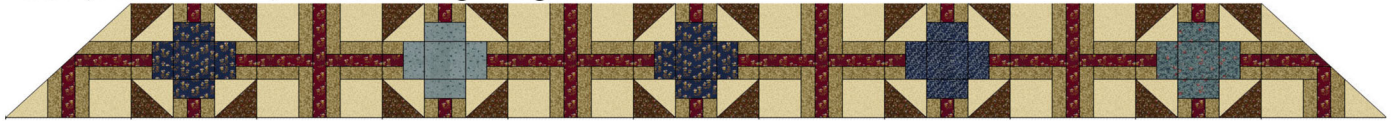


WINDHAM FABRICS

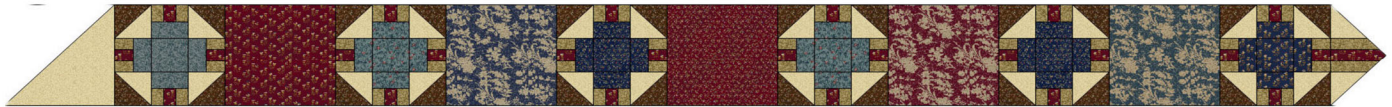
# Star Crossing

Page 7

Block 2, Fabric I Block 1, and Side Setting Triangle.



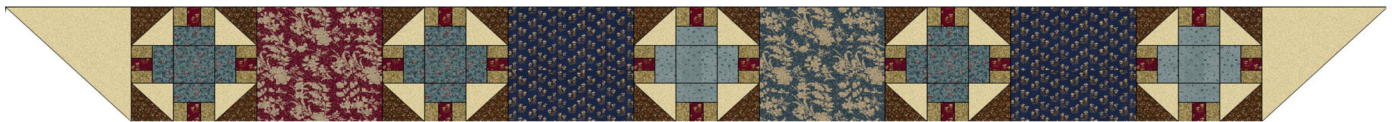
Row 6: Fabric E 13 7/8" quarter square triangle, Fabric G Block 1, Fabric C 9 1/2" square, Fabric I Block 1, Fabric M 9 1/2" square, Fabric F Block 1, Fabric N 9 1/2" square, Fabric I Block 1, Fabric K 9 1/2" square, Fabric F Block 1, Fabric L 9 1/2" square, Fabric J Block 1, Corner Square Triangle.



Row 7: Corner Square Triangle, Fabric D Block 1, Block 2, Fabric F Block 1, Block 2, Fabric H Block 1, Block 2, Fabric J Block 1, Block 2, Fabric H Block 1, Block 2, Fabric G Block 1, Side Setting Triangle.



Row 8: Fabric E 13 7/8" quarter square triangle, Fabric I Block 1, Fabric K 9 1/2" square, Fabric I Block 1, Fabric J 9 1/2" square, Fabric D Block 1, Fabric L 9 1/2" square, Fabric I Block 1, Fabric J 9 1/2" square, Fabric D Block 1, Fabric E 13 7/8" quarter square triangle.



Row 9: Side Setting Triangle, Fabric F Block 1, Block 2, Fabric H Block 1, Block 2, Fabric H Block 1, Block 2, Fabric H Block 1, Side Setting Triangle.



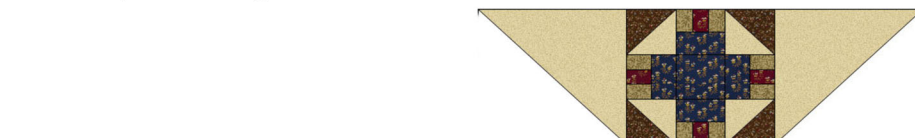
Row 10: Fabric E 13 7/8" quarter square triangle, Fabric H Block 1, Fabric O 9 1/2" square, Fabric J Block 1, Fabric M 9 1/2" square, Fabric F Block 1, Fabric E 13 7/8" quarter square triangle.



Row 11: Side Setting Triangle, Fabric G Block 1, Block 2, Fabric D Block 1, Side Setting Triangle.



Row 12: Sew a Fabric E 13 7/8" quarter square triangle to both sides of a Fabric J Block 1 as shown. Sew a Corner Square Triangle to the bottom of the block.

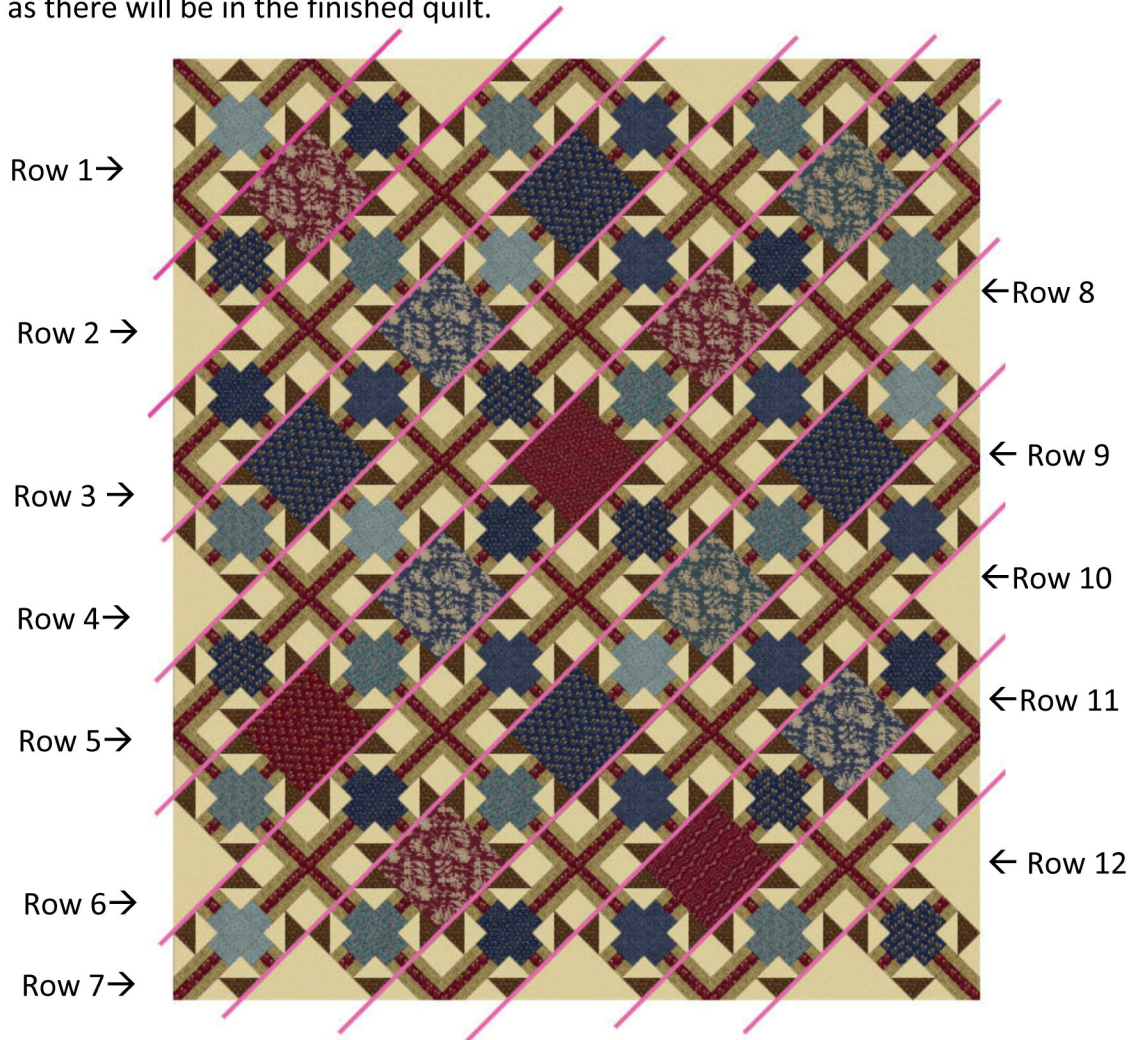


WINDHAM FABRICS

# Star Crossing

Page 8

Sew the rows together in order from Row 1 to Row 12. See the diagram below showing the rows on a diagonal as there will be in the finished quilt.



Layer the quilt top with batting and backing; quilt as desired. Using the Fabric A 2 ½" strips, bind the edges to finish.

Be sure to visit [www.windhamfabrics.com](http://www.windhamfabrics.com) to see the complete collection and to download other Free Projects